

# Webtoon Paint

## Implementation

Team 2

200911371 김민철

200911381 김진현

200911417 정명권

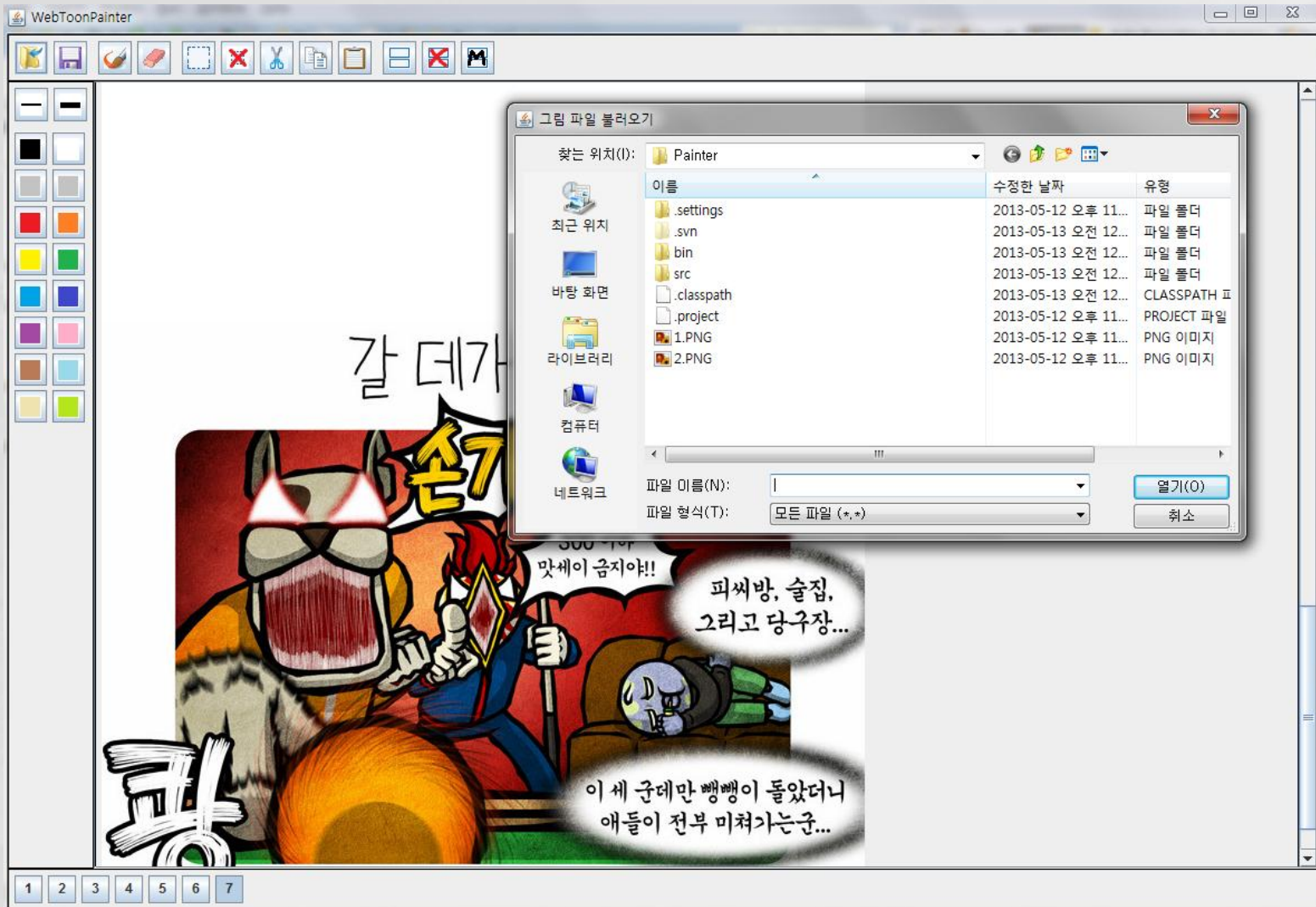
# I N D E X

0. Refine Note
1. UI
2. Demo
3. Unit Test Specification
4. Unit Test Report

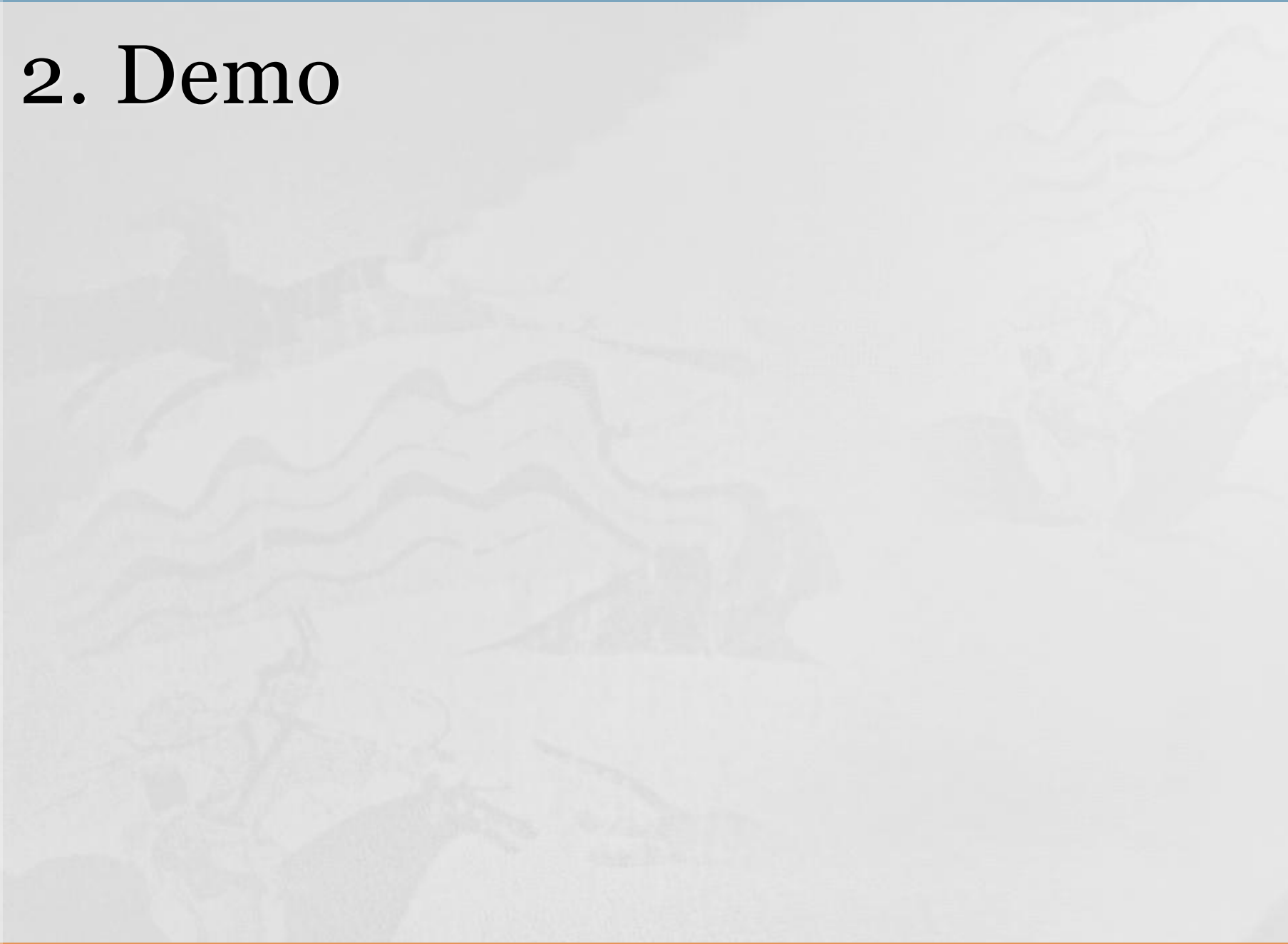
# 0. Refine Note

- 기능 축소
  - 파일 입출력 관련 Use Case 축소  
Java에서 제공하는 GUI 사용
  - 문자 입력 Use Case 삭제
  - 기타 GUI를 위해 존재했던 Function 삭제  
checkCutIn, drawDot, eraseDot 등
- Picture class 삭제
  - Java에서 제공하는 BufferedImage 사용

# 1. UI



# 2. Demo



# 3. Unit Test Specification

## Test Design Specification

- requestBrushing()

Identifier	Feature	Value
WTT.UTD.02	SelectedTool	현재 사용되고 있는 도구, 1로 변경된다 0. None 1. Brush 2. Eraser 3. Area
	dt.linesize	DrawingTool에 저장된 굵기 1. 가늘게 5. 굵게

- requestSelectArea()

Identifier	Feature	Value
WTT.UTD.04	SelectedTool	현재 사용되고 있는 도구, 3으로 변경된다 0. None 1. Brush 2. Eraser 3. Area

# 3. Unit Test Specification

## Test Case Specification

Identifier	Input Specification	Output Specification
WTT.UTC.02.01	dt.linesize = 1, SelectedTool = 0	dt.linesize = 1, SelectedTool = 1
WTT.UTC.02.02	dt.linesize = 1, SelectedTool = 1	dt.linesize = 1, SelectedTool = 1
WTT.UTC.02.03	dt.linesize = 1, SelectedTool = 2	dt.linesize = 1, SelectedTool = 1
WTT.UTC.02.04	dt.linesize = 1, SelectedTool = 3	dt.linesize = 1, SelectedTool = 1
WTT.UTC.02.05	dt.linesize = 1, SelectedTool = 0	dt.linesize = 1, SelectedTool = 1
WTT.UTC.02.06	dt.linesize = 5, SelectedTool = 0	dt.linesize = 5, SelectedTool = 1
WTT.UTC.02.07	dt.linesize = 5, SelectedTool = 1	dt.linesize = 5, SelectedTool = 1
WTT.UTC.02.08	dt.linesize = 5, SelectedTool = 2	dt.linesize = 5, SelectedTool = 1
WTT.UTC.02.09	dt.linesize = 5, SelectedTool = 3	dt.linesize = 5, SelectedTool = 1

Identifier	Input Specification	Output Specification
WTT.UTC.04.01	SelectedTool = 0	SelectedTool = 3
WTT.UTC.04.02	SelectedTool = 1	SelectedTool = 3
WTT.UTC.04.03	SelectedTool = 2	SelectedTool = 3
WTT.UTC.04.04	SelectedTool = 3	SelectedTool = 3

# 4. Unit Test Report

Package Explorer JUnit

Finished after 6.513 seconds

Runs: 9/9 Errors: 0 Failures: 1

InterfaceTest [Runner: JUnit 4] (6.500 s)

- testRequestLoadImage (6.008 s)
- testRequestBrushing (0.012 s)
- testRequestSetLineSize (0.017 s)
- testRequestSelectArea (0.014 s)
- testrequestCutOffArea (0.085 s)
- testRequestPasteArea (0.057 s)
- testRequestAddCut (0.021 s)
- testRequestDelCut (0.019 s)
- testRequestMergeCut (0.266 s)

Failure Trace

```
java.lang.AssertionError: expected:<5> but was:<1>  
at InterfaceTest.testRequestSetLineSize(InterfaceTest.
```

```
Interface.java Brush.java Project.java InterfaceTest.java Cut.java  
  
    }  
    }  
  
    @Test  
    public void testRequestSetLineSize() {  
        Interface IF = new Interface();  
  
        IF.size = 5;  
        IF.dt.linesize = 5;  
        IF.requestSetLineSize(1);  
        assertEquals(IF.size, 1);  
        assertEquals(IF.dt.linesize, 1);  
  
        IF.size = 1;  
        IF.dt.linesize = 5;  
        IF.requestSetLineSize(1);  
        assertEquals(IF.size, 1);  
        assertEquals(IF.dt.linesize, 1);  
  
        IF.size = 1;  
        IF.dt.linesize = 1;  
        IF.requestSetLineSize(1);  
        assertEquals(IF.size, 1);  
        assertEquals(IF.dt.linesize, 1);  
  
        IF.size = 5;  
        IF.dt.linesize = 1;  
        IF.requestSetLineSize(1);  
        assertEquals(IF.size, 1);  
        assertEquals(IF.dt.linesize, 1);  
    }  
}
```